



MABLETHORPE PRIMARY ACADEMY



Y1 Autumn Newsletter

Dear Parents/Carers,

Welcome to Year 1! We hope you all enjoyed the Summer holidays. Thank you for all your efforts in ensuring that your child is wearing the correct uniform and appropriate hair styles. The children look very smart! Please read the information below and overleaf, so that you don't miss anything that is going on during the next two terms.

Our team this year include teaching staff **Mrs Sanghvi, Mrs Dowlman and Mr. Meades.** Our teaching assistants, **Mrs. Draper, Miss Richards and Mrs Richardson** will be doing valuable support work in Y1. Information about what we are learning is included overleaf.

Thank you,

Dates for your Diary

Term 1 Tuesday 4th September 2018 to Friday 19th October 2018

Term 2 Tuesday 30th October 2018 to Thursday 20th December 2018

Term 3 Monday 7th January 2019 to Friday 15th February 2019

Term 4 Monday 25th February 2019 to Friday 5th April 2019

Term 5 Tuesday 23rd April 2019 to Friday 24th May 2019

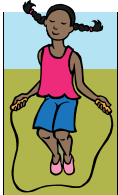
Term 6 Monday 3rd June 2019 to Friday 19th July 2019

**Year 1 welcome meeting – 12th
September 2018 at 2.30pm**

Homework

Homework will be sent on Fridays. Your child will bring home two reading books. One of them will be for your child to read with your support. This book will have a colour sticker on the front cover. There will also be a book with a white numbered sticker. This book will be one your child has chosen for you to enjoy with them. They will also bring home a big red homework book. In this book there will be a sheet of homework tasks to be completed over the term. Your child will also be able to access My Maths homework online. Your child's homework and folder **MUST** be returned by

PE Days

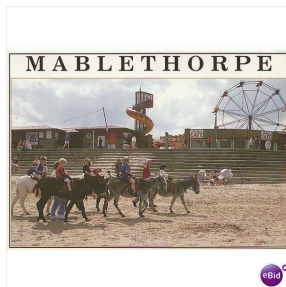
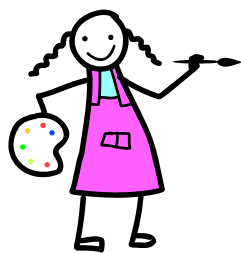


PE will take place on Thursdays and Fridays during this first term. Please include pumps or trainers in your child's kit. Also, please remember that earrings **must** be removed on PE days! Thank you!

What are we learning?

Our geography theme this term is "Where we live—Mablethorpe" where we will be learning about our local area. In Mathematics, we will be working on our counting skills and ordering numbers. We will also be working on addition, subtraction and patterns. To develop reading and writing, we will continue our successful work on the "Read, Write Inc" programme. We will also be learning about Harvest and how the seasons change over the year. We will be having lots of fun learning Autumn poems and songs and we will also be finding out about the properties of different materials in our science work. In PSHE, we will be learning about growing and independence and how to keep safe in the local environment. We will also be learning how to mix colours and learn about an artist called Kadinsky.

Painting Our Locality

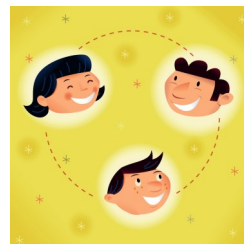


Materials

Stories



Dance



Games



PSHE

Autumn Term Weather

As you are aware, the weather can be very changeable during the autumn, so please could you make sure you send your child with a **coat with their name inside it**, even if it is sunny first thing in the morning. Also, as children are often taking their sweatshirts on and off at this time of year, could you **please make sure that all uniform has your child's name in it**. Thank you.